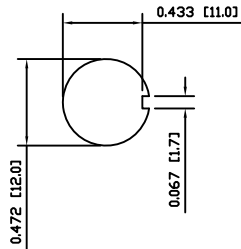
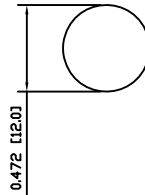


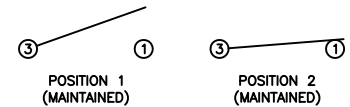
SUGGESTED PANEL CUTOUT



ALTERNATE PANEL CUTOUT



SCHEMATIC



MATERIALS

- BODY:  
Phenolic, UL94 V-0
- ACTUATOR:  
Nickel Plated Brass
- BUSHING:  
Nickel Plated Brass
- HOUSING:  
Nickel Plated Steel
- HARDWARE:  
Nickel Plated Brass
- SPACER PLATE:  
Epoxy Board
- SPRING:  
Steel
- ACTUATOR PLUNGER:  
Phenolic, UL94 V-0
- MOBILE CONTACT BAR:  
Silver Plated Copper
- CENTER PIVOT:  
Silver Plated Copper
- CONTACTS:  
Silver Alloy Clad Copper
- TERMINALS:  
Brass  
Steel

SPECIFICATIONS

- FUNCTION:  
1P1T OFF-ON
- RATINGS:  
ANSI/UL1054 and CAN/CSA C22.2 No.55 (E194579):  
20A 125VAC [cURus]  
15A 277VAC [cURus]  
2HP 125/277VAC [cURus]
- CONTACT RESISTANCE:  
Initial: 10mΩ Max.
- INSULATION RESISTANCE:  
10MΩ Min.
- DIELECTRIC STRENGTH:  
1,500VAC for 1 Minute
- OPERATING LIFE:  
6,000 Cycles [cURus]
- TEMPERATURE:  
Operating: 0°C to 85°C [cURus]
- APPROVALS:



ACTUATOR	B	10/06/10	CAB
BODY	B	10/06/10	CAB
MATERIALS	B	10/06/09	CAB
SPECIFICATIONS	B	10/06/09	CAB
REFERENCE	REV.	DATE	BY

THE INFORMATION CONTAINED IN THIS DOCUMENT IS PROPRIETARY TO E-SWITCH AND IS NOT TO BE COPIED OR TRANSFERRED

B	CORRECTED PANEL CUTOUT, SPECIFICATIONS, AND MATERIALS	19133	10/06/10	CAB
A	INITIAL RELEASE	19063	10/05/12	CAB
REV.	DESCRIPTION	PCR	DATE	DRAWN BY

DIMENSIONS	
INCHES [MILLIMETERS]	
GENERAL TOLERANCES	
±0.008 [±0.2] / ±1'	
SCALE	PROJECTION
DRAWING NOT TO SCALE	1st Angle

TITLE			
ST161D02			
ITEM NUMBER	DATE	REVISION	
34-ST161D02	JUNE 10, 2010	B	